

CD4093BM/CD4093BC Quad 2-Input NAND Schmitt Trigger

General Description

The CD4093B consists of four Schmitt-trigger circuits. Each circuit functions as a 2-input NAND gate with Schmitt-trigger action on both inputs. The gate switches at different points for positive and negative-going signals. The difference between the positive (V_{T+}) and the negative voltage (V_{T-}) is defined as hysteresis voltage (V_H).

All outputs have equal source and sink currents and conform to standard B-series output drive (see Static Electrical Characteristics).

Features

- Wide supply voltage range 3.0V to 15V
- Schmitt-trigger on each input with no external components
- Noise immunity greater than 50%

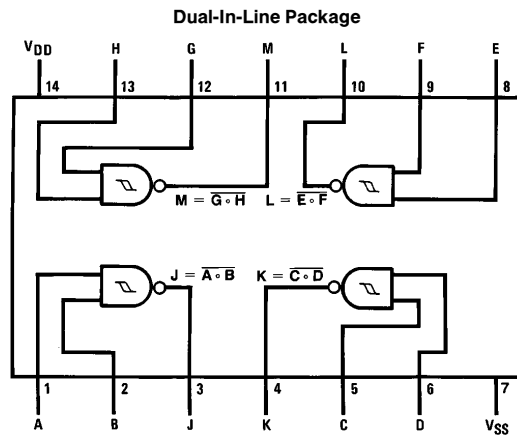
- Equal source and sink currents
- No limit on input rise and fall time
- Standard B-series output drive
- Hysteresis voltage (any input) $T_A = 25^\circ\text{C}$

| | | |
|------------|------------------------|---------------------|
| Typical | $V_{DD} = 5.0\text{V}$ | $V_H = 1.5\text{V}$ |
| | $V_{DD} = 10\text{V}$ | $V_H = 2.2\text{V}$ |
| | $V_{DD} = 15\text{V}$ | $V_H = 2.7\text{V}$ |
| Guaranteed | | $V_H = 0.1 V_{DD}$ |

Applications

- Wave and pulse shapers
- High-noise-environment systems
- Monostable multivibrators
- Astable multivibrators
- NAND logic

Connection Diagram



TL/F/5982-1

Top View

Order Number CD4093B

Absolute Maximum Ratings (Notes 1 & 2)

If Military/Aerospace specified devices are required, please contact the National Semiconductor Sales Office/Distributors for availability and specifications.

| | |
|-------------------------------------|---------------------------------|
| DC Supply Voltage (V_{DD}) | -0.5 to +18 V_{DC} |
| Input Voltage (V_{IN}) | -0.5 to V_{DD} + 0.5 V_{DC} |
| Storage Temperature Range (T_S) | -65°C to +150°C |
| Power Dissipation (P_D) | |
| Dual-In-Line | 700 mW |
| Small Outline | 500 mW |
| Lead Temperature (T_L) | |
| (Soldering, 10 seconds) | 260°C |

Recommended Operating Conditions (Note 2)

| | |
|---------------------------------------|------------------------|
| DC Supply Voltage (V_{DD}) | 3 to 15 V_{DC} |
| Input Voltage (V_{IN}) | 0 to V_{DD} V_{DC} |
| Operating Temperature Range (T_A) | |
| CD4093BM | -55°C to +125°C |
| CD4093BC | -40°C to +85°C |

DC Electrical Characteristics CD4093BM (Note 2)

| Symbol | Parameter | Conditions | -55°C | | +25°C | | | +125°C | | Units |
|-----------|--|------------------------------------|-------|------|-------|------------|------|--------|------|---------|
| | | | Min | Max | Min | Typ | Max | Min | Max | |
| I_{DD} | Quiescent Device Current | $V_{DD} = 5V$ | | 0.25 | | | 0.25 | | 7.5 | μA |
| | | $V_{DD} = 10V$ | | 0.5 | | | 0.5 | | 15.0 | μA |
| | | $V_{DD} = 15V$ | | 1.0 | | | 1.0 | | 30.0 | μA |
| V_{OL} | Low Level Output Voltage | $V_{IN} = V_{DD}, I_O < 1 \mu A$ | | | | | | | | |
| | | $V_{DD} = 5V$ | | 0.05 | | 0 | 0.05 | | 0.05 | V |
| | | $V_{DD} = 10V$ | | 0.05 | | 0 | 0.05 | | 0.05 | V |
| | | $V_{DD} = 15V$ | | 0.05 | | 0 | 0.05 | | 0.05 | V |
| V_{OH} | High Level Output Voltage | $V_{IN} = V_{SS}, I_O < 1 \mu A$ | | | | | | | | |
| | | $V_{DD} = 5V$ | 4.95 | | 4.95 | 5 | | 4.95 | | V |
| | | $V_{DD} = 10V$ | 9.95 | | 9.95 | 10 | | 9.95 | | V |
| | | $V_{DD} = 15V$ | 14.95 | | 14.95 | 15 | | 14.95 | | V |
| V_{T^-} | Negative-Going Threshold Voltage (Any Input) | $ I_O < 1 \mu A$ | | | | | | | | |
| | | $V_{DD} = 5V, V_O = 4.5V$ | 1.3 | 2.25 | 1.5 | 1.8 | 2.25 | 1.5 | 2.3 | V |
| | | $V_{DD} = 10V, V_O = 9V$ | 2.85 | 4.5 | 3.0 | 4.1 | 4.5 | 3.0 | 4.65 | V |
| V_{T^+} | Positive-Going Threshold Voltage (Any Input) | $ I_O < 1 \mu A$ | | | | | | | | |
| | | $V_{DD} = 5V, V_O = 0.5V$ | 2.75 | 3.65 | 2.75 | 3.3 | 3.5 | 2.65 | 3.5 | V |
| | | $V_{DD} = 10V, V_O = 1V$ | 5.5 | 7.15 | 5.5 | 6.2 | 7.0 | 5.35 | 7.0 | V |
| V_H | Hysteresis ($V_{T^+} - V_{T^-}$) (Any Input) | $V_{DD} = 5V$ | 0.5 | 2.35 | 0.5 | 1.5 | 2.0 | 0.35 | 2.0 | V |
| | | $V_{DD} = 10V$ | 1.0 | 4.30 | 1.0 | 2.2 | 4.0 | 0.70 | 4.0 | V |
| | | $V_{DD} = 15V$ | 1.5 | 6.30 | 1.5 | 2.7 | 6.0 | 1.20 | 6.0 | V |
| I_{OL} | Low Level Output Current (Note 3) | $V_{IN} = V_{DD}$ | | | | | | | | |
| | | $V_{DD} = 5V, V_O = 0.4V$ | 0.64 | | 0.51 | 0.88 | | 0.36 | | mA |
| | | $V_{DD} = 10V, V_O = 0.5V$ | 1.6 | | 1.3 | 2.25 | | 0.9 | | mA |
| | | $V_{DD} = 15V, V_O = 1.5V$ | 4.2 | | 3.4 | 8.8 | | 2.4 | | mA |
| I_{OH} | High Level Output Current (Note 3) | $V_{IN} = V_{SS}$ | | | | | | | | |
| | | $V_{DD} = 5V, V_O = 4.6V$ | -0.64 | | 0.51 | -0.88 | | -0.36 | | mA |
| | | $V_{DD} = 10V, V_O = 9.5V$ | -1.6 | | -1.3 | -2.25 | | -0.9 | | mA |
| | | $V_{DD} = 15V, V_O = 13.5V$ | -4.2 | | -3.4 | -8.8 | | -2.4 | | mA |
| I_{IN} | Input Current | $V_{DD} = 15V, V_{IN} = 0V$ | | -0.1 | | -10^{-5} | -0.1 | | -1.0 | μA |
| | | $V_{DD} = 15V, V_{IN} = 15V$ | | 0.1 | | 10^{-5} | 0.1 | | 1.0 | μA |

Note 1: "Absolute Maximum Ratings" are those values beyond which the safety of the device cannot be guaranteed; they are not meant to imply that the devices should be operated at these limits. The table of "Recommended Operating Conditions" and "Electrical Characteristics" provides conditions for actual device operation.

Note 2: $V_{SS} = 0V$ unless otherwise specified.

Note 3: I_{OH} and I_{OL} are tested one output at a time.

DC Electrical Characteristics CD4093BC (Note 2)

| Symbol | Parameter | Conditions | -40°C | | +25°C | | | +85°C | | Units | |
|-----------------|---|--|-------|-------|-------|-------------------|------|-------|------|-------|----|
| | | | Min | Max | Min | Typ | Max | Min | Max | | |
| I _{DD} | Quiescent Device Current | V _{DD} = 5V | | 1.0 | | | | 1.0 | | 7.5 | μA |
| | | V _{DD} = 10V | | 2.0 | | | | 2.0 | | 15.0 | μA |
| | | V _{DD} = 15V | | 4.0 | | | | 4.0 | | 30.0 | μA |
| V _{OL} | Low Level Output Voltage | V _{IN} = V _{DD} , I _O < 1 μA | | | | | | | | | |
| | | V _{DD} = 5V | | 0.05 | | 0 | 0.05 | | | 0.05 | V |
| | | V _{DD} = 10V | | 0.05 | | 0 | 0.05 | | | 0.05 | V |
| V _{OH} | High Level Output Voltage | V _{IN} = V _{SS} , I _O < 1 μA | | | | | | | | | |
| | | V _{DD} = 5V | 4.95 | | 4.95 | 5 | | 4.95 | | | V |
| | | V _{DD} = 10V | 9.95 | | 9.95 | 10 | | 9.95 | | | V |
| V _{T-} | Negative-Going Threshold Voltage (Any Input) | V _{DD} = 5V, V _O = 4.5V | 1.3 | 2.25 | 1.5 | 1.8 | 2.25 | 1.5 | 2.3 | | V |
| | | V _{DD} = 10V, V _O = 9V | 2.85 | 4.5 | 3.0 | 4.1 | 4.5 | 3.0 | 4.65 | | V |
| | | V _{DD} = 15V, V _O = 13.5V | 4.35 | 6.75 | 4.5 | 6.3 | 6.75 | 4.5 | 6.9 | | V |
| V _{T+} | Positive-Going Threshold Voltage (Any Input) | V _{DD} = 5V, V _O = 0.5V | 2.75 | 3.6 | 2.75 | 3.3 | 3.5 | 2.65 | 3.5 | | V |
| | | V _{DD} = 10V, V _O = 1V | 5.5 | 7.15 | 5.5 | 6.2 | 7.0 | 5.35 | 7.0 | | V |
| | | V _{DD} = 15V, V _O = 1.5V | 8.25 | 10.65 | 8.25 | 9.0 | 10.5 | 8.1 | 10.5 | | V |
| V _H | Hysteresis (V _{T+} - V _{T-}) (Any Input) | V _{DD} = 5V | 0.5 | 2.35 | 0.5 | 1.5 | 2.0 | 0.35 | 2.0 | | V |
| | | V _{DD} = 10V | 1.0 | 4.3 | 1.0 | 2.2 | 4.0 | 0.70 | 4.0 | | V |
| | | V _{DD} = 15V | 1.5 | 6.3 | 1.5 | 2.7 | 6.0 | 1.20 | 6.0 | | V |
| I _{OL} | Low Level Output Current (Note 3) | V _{IN} = V _{DD} | | | | | | | | | |
| | | V _{DD} = 5V, V _O = 0.4V | 0.52 | | 0.44 | 0.88 | | 0.36 | | | mA |
| | | V _{DD} = 10V, V _O = 0.5V | 1.3 | | 1.1 | 2.25 | | 0.9 | | | mA |
| I _{OH} | High Level Output Current (Note 3) | V _{IN} = V _{SS} | | | | | | | | | |
| | | V _{DD} = 5V, V _O = 4.6V | -0.52 | | 0.44 | -0.88 | | -0.36 | | | mA |
| | | V _{DD} = 10V, V _O = 9.5V | -1.3 | | -1.1 | -2.25 | | -0.9 | | | mA |
| I _{IN} | Input Current | V _{DD} = 15V, V _{IN} = 0V | | -0.3 | | -10 ⁻⁵ | -0.3 | | -1.0 | | μA |
| | | V _{DD} = 15V, V _{IN} = 15V | | 0.3 | | 10 ⁻⁵ | 0.3 | | 1.0 | | μA |
| | | | | | | | | | | | |

AC Electrical Characteristics*

T_A = 25°C, C_L = 50 pF, R_L = 200k, Input t_r, t_f = 20 ns, unless otherwise specified

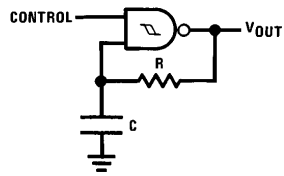
| Symbol | Parameter | Conditions | Min | Typ | Max | Units |
|-------------------------------------|-------------------------------|-----------------------|-----|-----|-----|-------|
| t _{PHL} , t _{PLH} | Propagation Delay Time | V _{DD} = 5V | | 300 | 450 | ns |
| | | V _{DD} = 10V | | 120 | 210 | ns |
| | | V _{DD} = 15V | | 80 | 160 | ns |
| t _{THL} , t _{TLH} | Transition Time | V _{DD} = 5V | | 90 | 145 | ns |
| | | V _{DD} = 10V | | 50 | 75 | ns |
| | | V _{DD} = 15V | | 40 | 60 | ns |
| C _{IN} | Input Capacitance | (Any Input) | | 5.0 | 7.5 | pF |
| C _{PD} | Power Dissipation Capacitance | (Per Gate) | | 24 | | pF |

*AC Parameters are guaranteed by DC correlated testing.

Note 2: V_{SS} = 0V unless otherwise specified.

Note 3: I_{OH} and I_{OL} are tested one output at a time.

Typical Applications



Assume $t_1 + t_2 \gg t_{pHL} + t_{pLH}$ then:

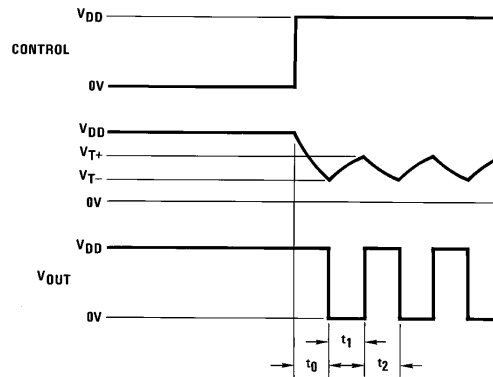
$$t_0 = RC \ln [V_{DD}/V_{T-}]$$

$$t_1 = RC \ln [(V_{DD} - V_{T-})/(V_{DD} - V_{T+})]$$

$$t_2 = RC \ln [V_{T+}/V_{T-}]$$

$$f = \frac{1}{t_1 + t_2} = \frac{1}{RC \ln \frac{(V_{T+})(V_{DD} - V_{T-})}{(V_{T-})(V_{DD} - V_{T+})}}$$

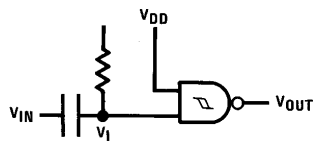
Gated Oscillator



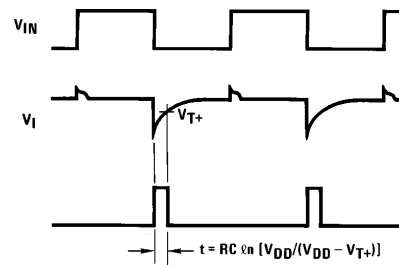
TL/F/5982-2

TL/F/5982-3

Gated One-Shot

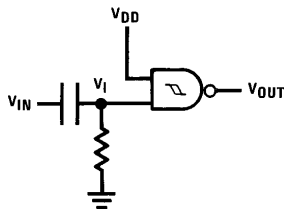


TL/F/5982-4

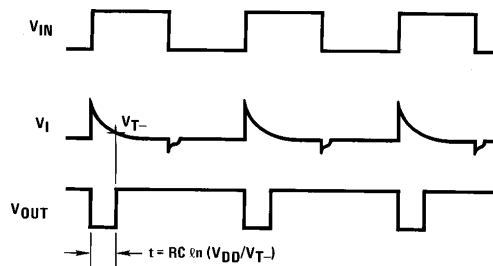


TL/F/5982-5

(a) Negative-Edge Triggered



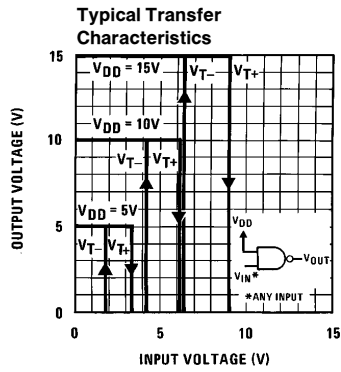
TL/F/5982-6



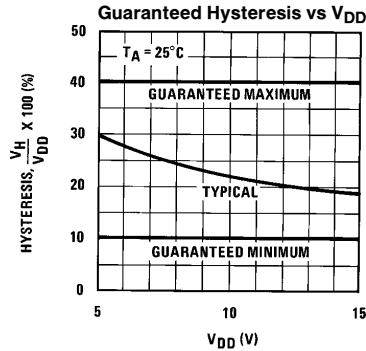
TL/F/5982-7

(b) Positive-Edge Triggered

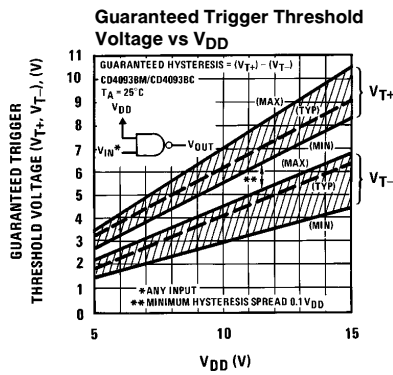
Typical Performance Characteristics



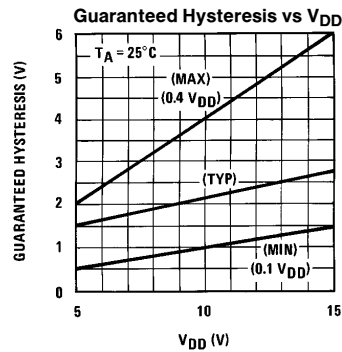
TL/F/5982-8



TL/F/5982-9

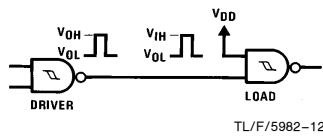


TL/F/5982-10

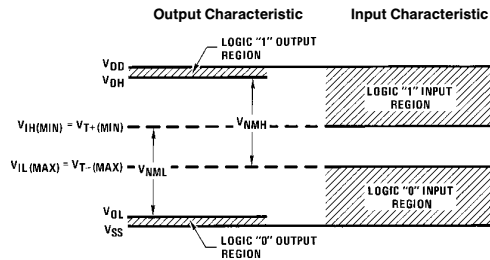


TL/F/5982-11

Input and Output Characteristics



TL/F/5982-12

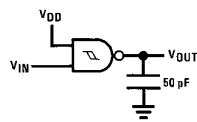


TL/F/5982-13

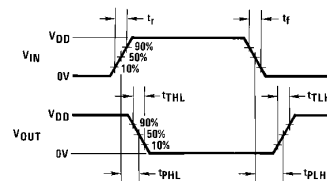
$$V_{NML} = V_{IH(MIN)} - V_{OL} \approx V_{IH(MIN)} = V_{T+ (MIN)}$$

$$V_{NMH} = V_{OH} - V_{IL(MAX)} \approx V_{DD} - V_{IL(MAX)} = V_{DD} - V_{T- (MAX)}$$

AC Test Circuits and Switching Time Waveforms



TL/F/5982-14



TL/F/5982-15

This datasheet has been downloaded from:

www.DatasheetCatalog.com

Datasheets for electronic components.

National Semiconductor was acquired by Texas Instruments.

http://www.ti.com/corp/docs/investor_relations/pr_09_23_2011_national_semiconductor.html

This file is the datasheet for the following electronic components:

CD4093BMJ - <http://www.ti.com/product/cd4093bmj?HQS=TI-null-null-dscatalog-df-pf-null-ww>

CD4093BCN - <http://www.ti.com/product/cd4093bcn?HQS=TI-null-null-dscatalog-df-pf-null-ww>

CD4093BCJ - <http://www.ti.com/product/cd4093bcj?HQS=TI-null-null-dscatalog-df-pf-null-ww>